

1A	ECO 770132	S.D.K.	M.HEAD	M.HALL	I.MCKEE	16.11.98
1A	ECO 770048 REVERSED BUFFER	T.M.B.	OVERTOOM	M.HALL	I.MCKEE	17.06.98
P1	PROTOTYPE	M.HALL	OVERTOOM	M.HALL	I.MCKEE	11.05.98
REV/ISS	AMENDMENTS	DRAWN	CHKD	D.O.	APVD	DATE

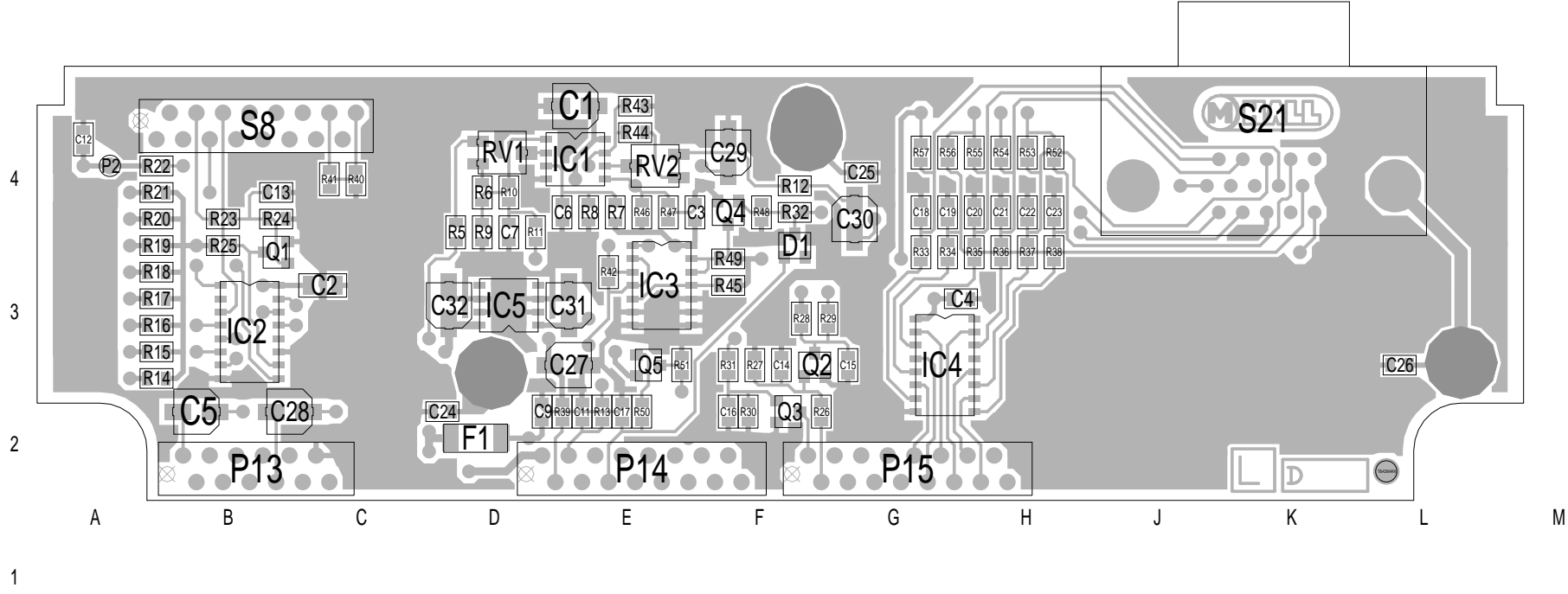
© TAIT ELECTRONICS  
 TA1966-01  
 PULSE ELECTRONICS DATA BOARD  
 IPN: 228-19661-02 ISSUE: A ID: 2.S.C. 1  
 PROJECT: TA1966-01 DESIGNER: H.OVERTOOM FILE NAME: A196612A FILE DATE: 16-11-98 NO.SHEETS: 2

	A	B	C	D	E	F	G	H	J	K	L	M
9												
8												
7												
6												
5												
4												
3												
2												
1												
0												

QTY: 0.74	IPN: 205-00010-12	CABLE FLAT RIBBON 16 CORE GREY (MECH PART)	QTY: 3.0	IPN: 349-00020-32	SCREW TAPTITE M3*8MM PAN POZI ST BZ (MECH PART)
QTY: 1.0	IPN: 240-00020-51	PLUG 12 WAY 2X6 MICROMATCH (PURE MECH PART)	QTY: 1.0	IPN: 399-00010-88	BAG STATIC SHIELDING 152*254MM (MECH PART)
QTY: 4.0	IPN: 240-00020-54	PLUG 16 WAY 2X8 MICROMATCH (MECH PART)	QTY: 1.0	IPN: 399-00010-51	BAG PLASTIC 75*100MM (MECH PART)
QTY: 1.0	IPN: 365-01482-00	LABEL BLANK 20X67MM BRIGHT ORANGE (MECH PART)	QTY: 1.0	IPN: 410-01064-01	PACKAGE HEADER CARD A3M2392 (MECH PART)

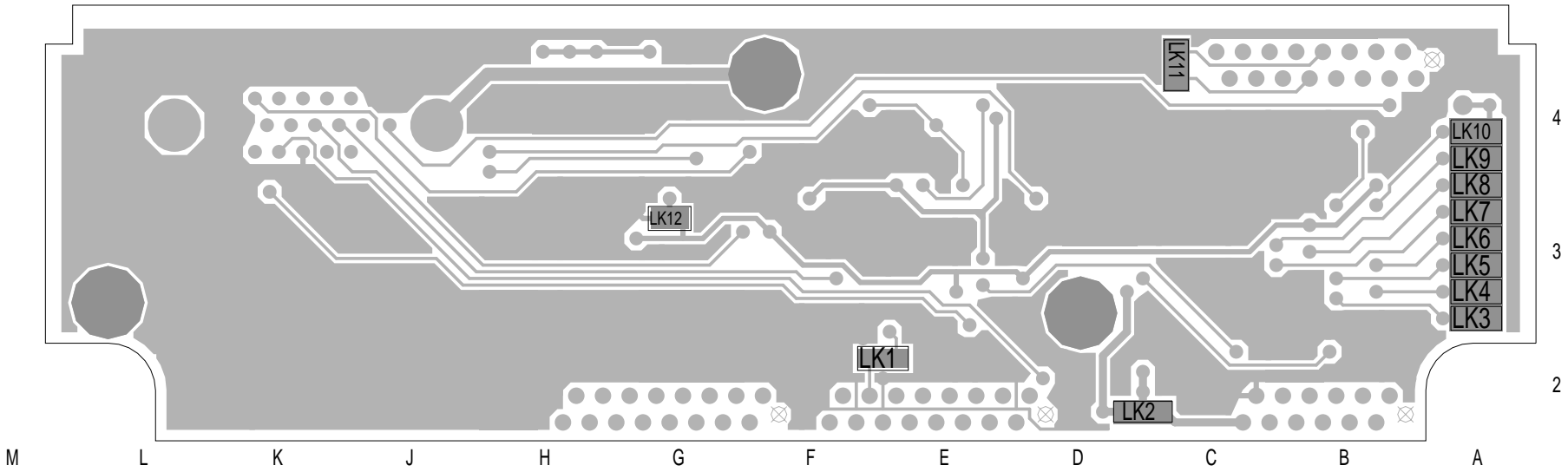
1A	ECO 770132	S.D.K.	M.HEAD	M.HALL	I.MCKEE	16.11.98
1A	ECO 770048 REVERSED BUFFER	T.M.B.	OVERTOOM	M.HALL	I.MCKEE	17.06.98
P1	PROTOTYPE	M.HALL	OVERTOOM	M.HALL	I.MCKEE	11.05.98
REVISS	AMENDMENTS	DRAWN	CHKD	D.O.	APVD	DATE

© TAIT ELECTRONICS					
TA1966-01					
PULSE ELECTRONICS DATA BOARD					
IPN:	ISSUE:	ID:			
228-19661-02	A	2.SC. 2			
PROJECT:	DESIGNER:	FILE NAME:	FILE DATE:	NO.SHEETS:	
TA1966-01	H.OVERTOOM	A196612A	16-11-98	2	



TAIT ELECTRONICS	IPN:	ISS:	ID:	DATE:
	228-19661-02	A	1.TA	16 Nov 1998
TA1966-01 PCB LAYOUT - TOP SIDE				

Scale: 1.6:1 ; Rotation: 0 degrees



TAIT ELECTRONICS  
 TA1966-01 PCB LAYOUT - BOTTOM SIDE

IPN: 228-19661-02  
 ISS: A  
 ID: 2.BA  
 DATE: 16 Nov 1998

Scale: 1:6:1  
 Rotation: 0 degrees